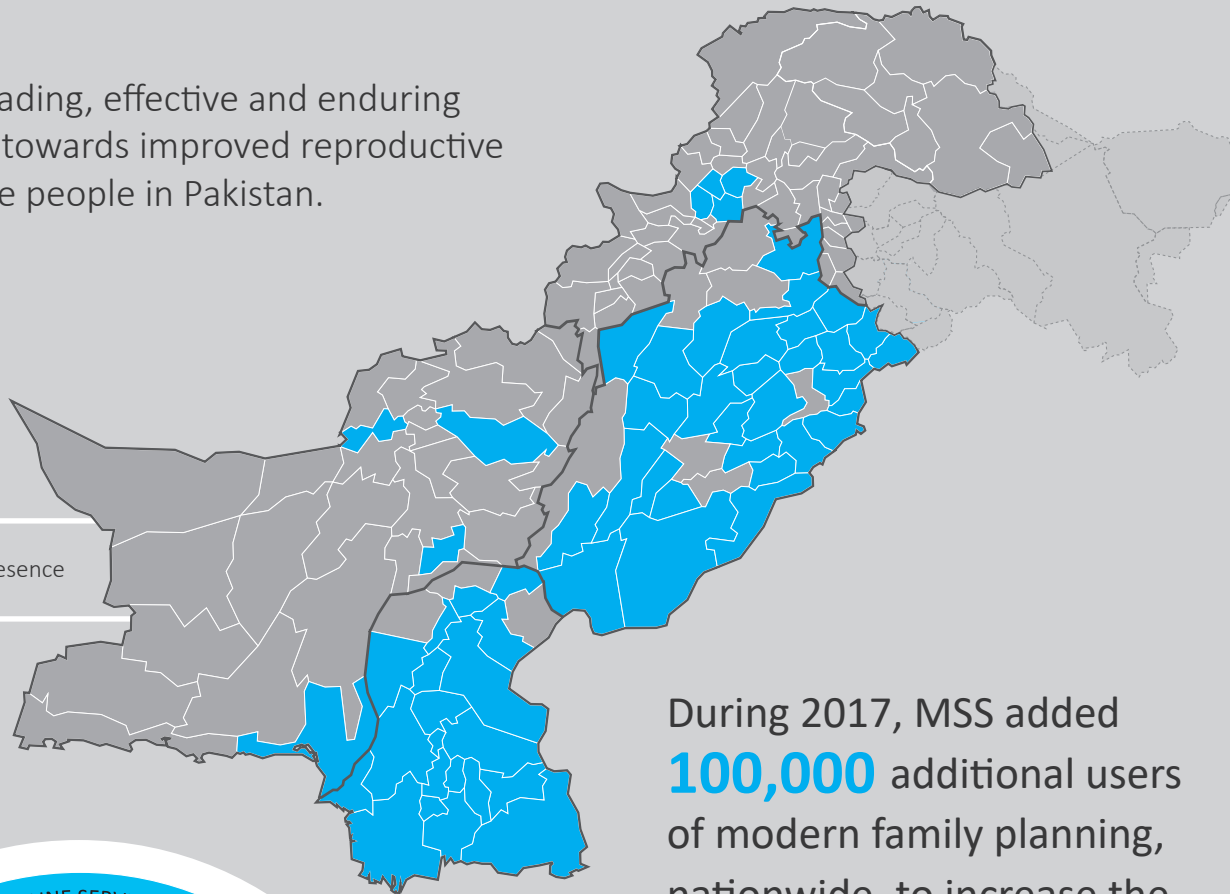




## Mission:

To be the leading, effective and enduring contributor towards improved reproductive health of the people in Pakistan.



 MSS' Presence

During 2017, MSS added **100,000** additional users of modern family planning, nationwide, to increase the national Modern Contraceptive Prevalence Rate (mCPR) by **0.4** percentage points.

 Field Health Educators  Mobile Van

### 65 Behtar Zindagi Centres

Sindh: 24 | Punjab: 30 | KPK: 6 | Balochistan: 5  
 Clients served: **134,398**



### 487 Social Franchise Clinics

Sindh: 186 | Punjab: 285 | KPK: 16  
 Clients served: **321,167**



### 15 Outreach teams

Punjab: 15  
 Clients served: **65,023**



### 912 other Providers

Clients served: **98,007**  
 (CHPs: 21,159 | PK Providers: 76,848)\*\*



### 487 Field Health Educators

Sindh: 186 | Punjab: 285 | KPK: 16  
 Clients mobilized: **224,817**

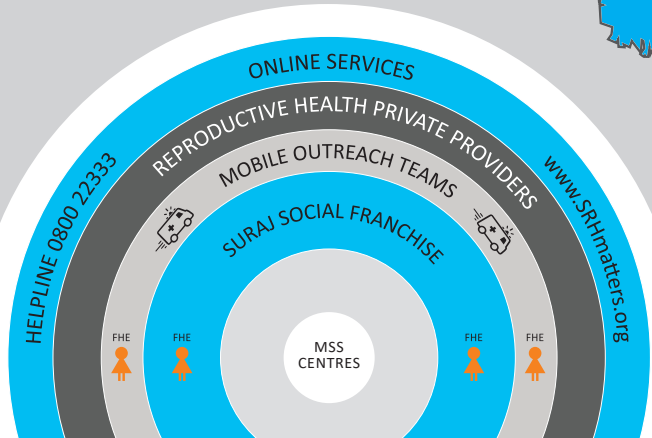


**7,584** calls received **195,555** website visits  
 (SRHmatters.org)

0800 22333 



\* Marie Stopes Society  
 \*\* Community Health Provider | Pehli Kiran  
 \*\*\* Channel strength is as of December 2017



# Road to FP2020\*

MSS is a leading private sector development partner committed to realizing Government of Pakistan's global FP2020 commitments. 2017 is the 5th year of that journey.

## MSS Impact 2017<sup>1</sup>



0.3m  
Family Planning  
Users served



0.1m  
Additional FP  
Users



1.6m  
Couple Years of  
Protection (CYP)\*\*



5,335  
Children's lives saved



539  
Mothers' lives saved

## MSS Client profile<sup>2</sup>

Average age 31 years

Average number of children 4

Have no formal education 60%

Living below \$1.25 a day 12%

## Our Five-year contribution to FP2020<sup>3</sup> commitments 2012 - 2017

### National

**mCPR**  
Modern Contraceptive  
Prevalence Rate



15% point increase  
required to meet the  
target

Of the total  
15% target, MSS  
contributed 2.8  
percentage points  
from 2012-17

### Additional FP users

0.9m additional  
FP users served  
by MSS



FP2020 Target  
6.9m

### Punjab

**mCPR**  
Modern Contraceptive  
Prevalence Rate



14.3% point increase  
required to meet the  
target

Of the total  
14.3% target, MSS  
contributed 2.7  
percentage points  
from 2012-17

### Additional FP users

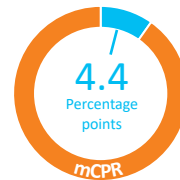
0.5m additional  
FP users served  
by MSS



FP2020 Target  
3.5m

### Sindh

**mCPR**  
Modern Contraceptive  
Prevalence Rate



15.5% point increase  
required to meet the  
target

Of the total  
15.5% target, MSS  
contributed 4.4  
percentage points  
from 2012-17

### Additional FP users

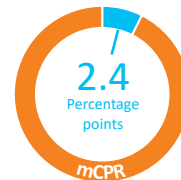
0.3m additional  
FP users served  
by MSS



FP2020 Target  
1.5m

### Khyber Pakhtunkhwa

**mCPR**  
Modern Contraceptive  
Prevalence Rate



9.9% point increase  
required to meet the  
target

Of the total  
9.9% target, MSS  
contributed 2.4  
percentage points  
from 2012-17

### Additional FP users

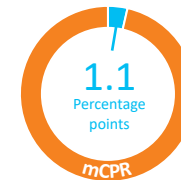
0.1m additional  
FP users served  
by MSS



FP2020 Target  
0.9m

### Balochistan

**mCPR**  
Modern Contraceptive  
Prevalence Rate



13.6% point increase  
required to meet the  
target

Of the total  
13.6% target, MSS  
contributed 1.1  
percentage points  
from 2012-17

### Additional FP users

0.02m additional  
FP users served  
by MSS



FP2020 Target  
0.4m

References: (1) IMPACT 2 (v3). Weinberger M, Pozo-Martin F, Boler T, Fry K, and Hopkins K. Impact 2: An innovative tool for estimating the impact of reproductive health programmes—methodology paper. London: Marie Stopes International, 2012.

(2) Marie Stopes Society Pakistan. (2017). Annual Client Exit Interview Survey 2017.

(3) The Government of Pakistan made its FP2020 commitment at the 2012 London Summit. <http://www.familyplanning2020.org/pakistan>

\* Family Planning 2020

\*\* CYP is the estimated protection provided by contraceptive methods during a one-year period, based upon the volume of all contraceptives sold or distributed free of charge to clients during that period.